

# RESIDENT ON RESIDENT AGGRESSION IN RESIDENTIAL CARE

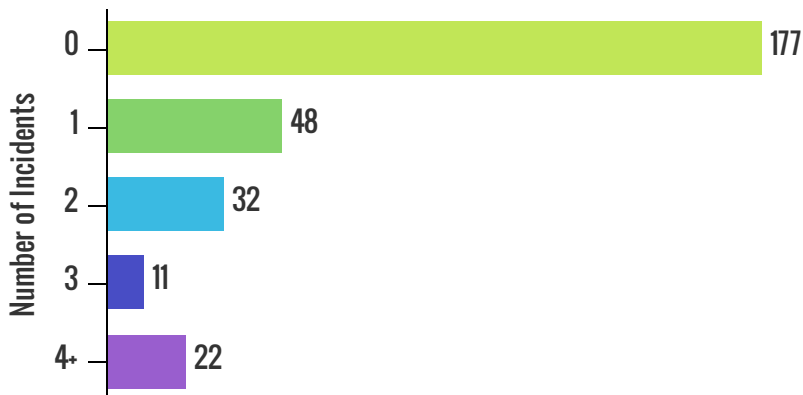
## DEFINITION:

An act of physical aggression that causes **severe harm** to another resident in a residential care home

In 2015, **1%** of older adults in Residential Care in British Columbia experienced an act of "Resident on Resident" aggression

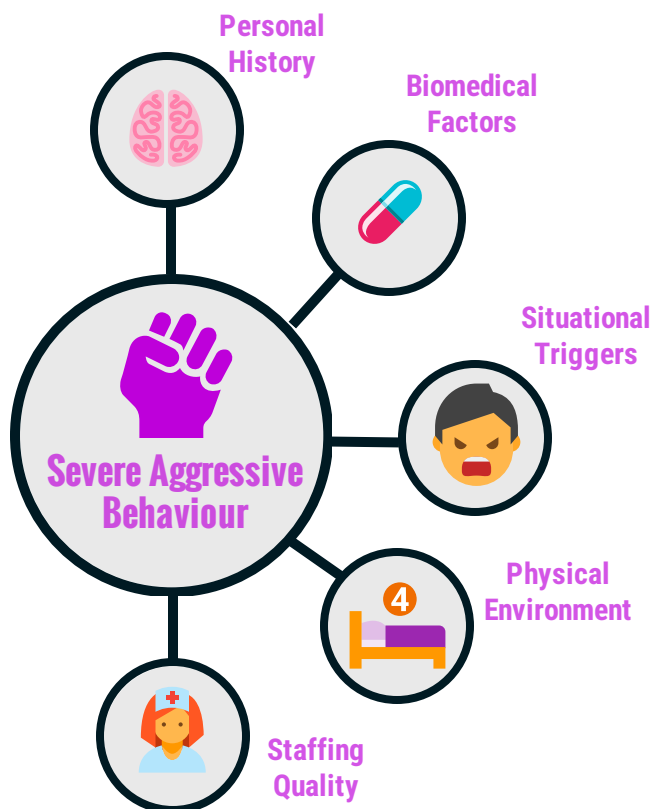


Residential Care Homes by Number of Incidents



Residential Care Homes with **4 or more** incidents had:

- ↑ Residents with Behavioural Issues
- ↑ Residents with Psychiatric Disorders
- ↑ Residents with Poor Cognitive Performance
- ↑ Mobile Residents
- ↓ Residents who use Wheelchairs
- ↓ Staffing Hours per Resident



"**Activities** are the main weapon against behaviour difficulties and violent behaviour."

- Dr. Paul Raia

V.P. Alzheimer's Association

"The best way to handle aggressive behaviors is to **prevent** them from occurring in the first place."

- Judy Berry

Founder of the Lakeview Ranch Model of Care

The **BC Care Providers Association (BCCPA)** supports:

- ✓ Addressing Resident on Resident Aggression as part of a National Dementia Strategy
- ✓ Exploring new care models and approaches, such as the [Behavioural Supports Ontario](#) or the [Dementia Village in the Netherlands](#).
- ✓ Creating improved, standardized reporting methods
- ↑ Increasing Anti-Violence & Dementia Care training and education for care staff through SafeCare BC
- ↑ Promoting [best practices](#), such as the BCCPA's [anti-psychotic best practice guide](#)
- ↑ Increasing public awareness and knowledge through [events](#)