



SafeCare BC

SafeCare BC was established in 2013 by the long term care sector and WorkSafe BC as a strategic collaboration to reduce injury rates through advanced training, awareness and promotion of best practice.

BE CARE AWARE OBJECTIVES

- Injury free workplaces
- Awareness of SafeCare BC
- Spread the word about the impact of injuries and what workers in the continuing care sector can do to make a positive change

BE CARE AWARE KEY MESSAGES

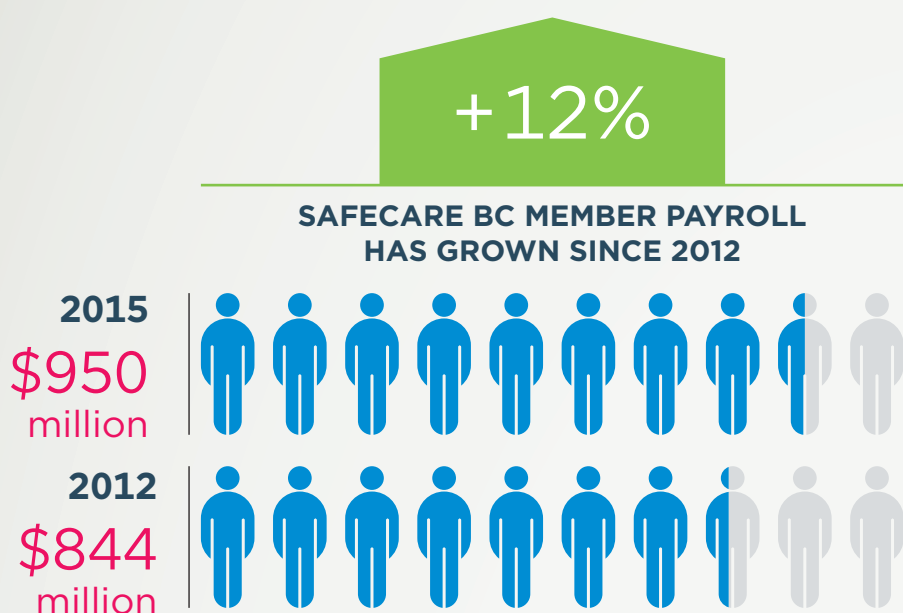
- High rates of injury claims in the Long Term Care sector have a negative impact on the lives of workers, the safety of seniors, and the bottom line of employers
- 2015 statistics show the sector is responding well to a new safety culture and injury rates are beginning to decline

Long Term Care

WorkSafe BC has released their annual profile of British Columbia's long term care sector. The report captures the total size of the long-term care sector by payroll, 2015 injury rates and claims costs.

EMPLOYMENT

Employment in the long term care sector has grown over the past four years.



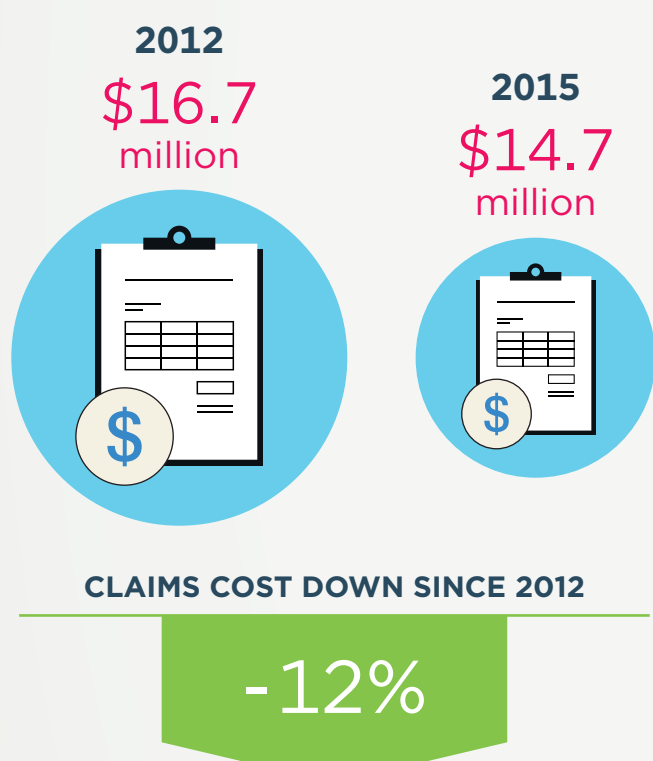
WORKDAYS LOST TO INJURY

Despite the sector's growth, total work days lost to injuries has declined since 2012.



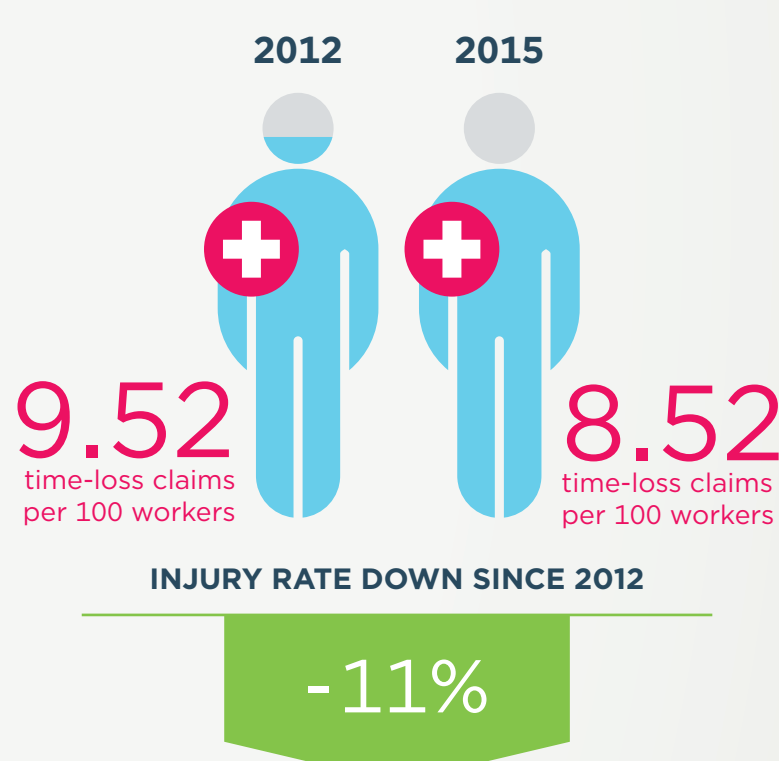
CLAIMS COST

Total claims paid by SafeCare BC members has declined since 2012



INJURY RATE

The overall injury rate for SafeCare BC members has declined over the past three years.



PREMIUMS

WorkSafe BC sector premiums have dropped for SafeCare BC members over three years.

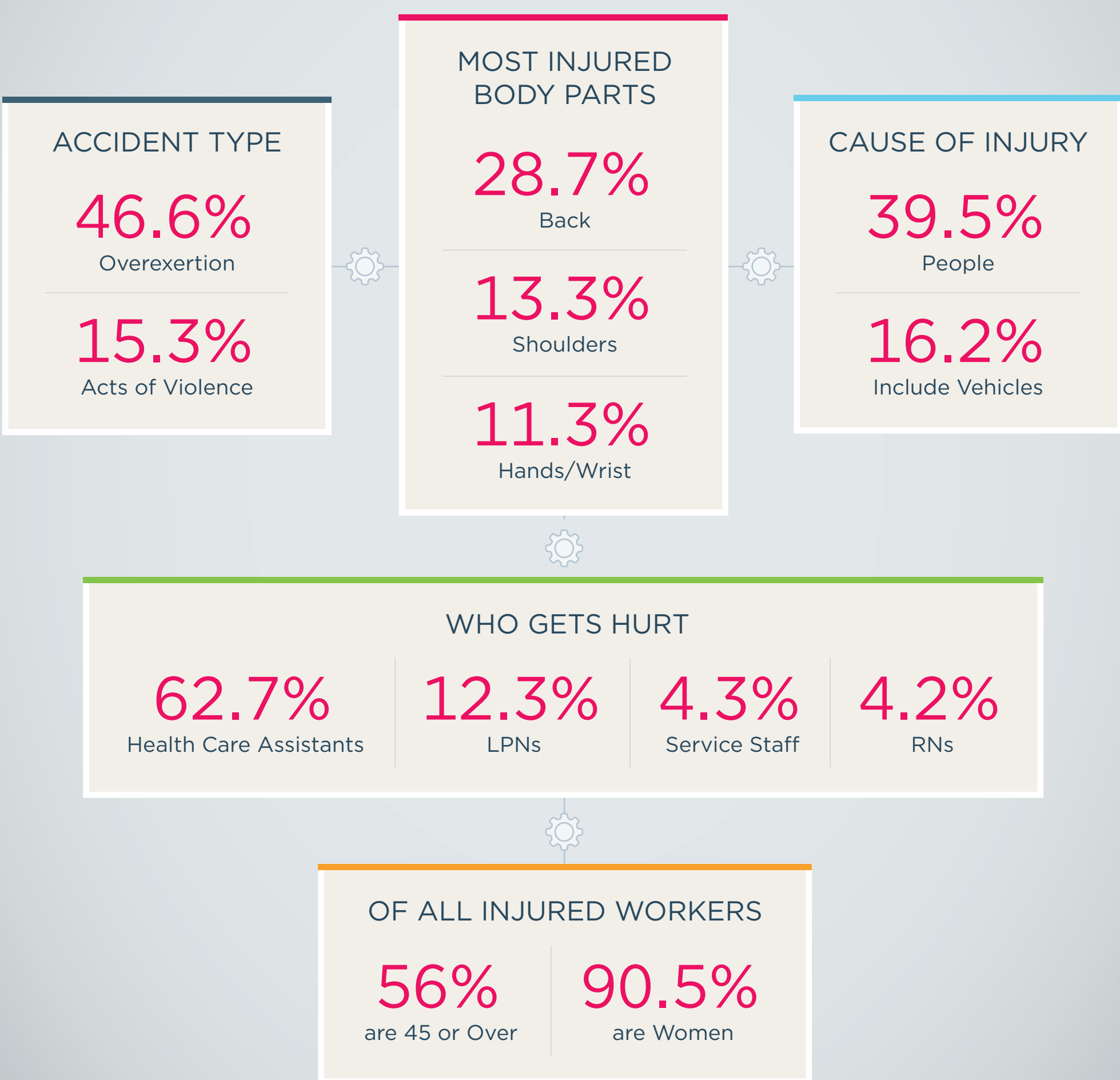


While there are positive developments, injury rates remain too high and more work needs to be done to build on this recent progress. The 2015 statistics confirm return-to-work rates are not improving and acts of violence now account for 15.3% of all accident types.

— SafeCare BC, 2016

ADDITIONAL FACTS ABOUT INJURIES IN BC'S LONG-TERM CARE SECTOR

All statistics are five-year averages.
For a full copy of the long term care sector profile, visit: www.safecarebc.ca



In partnership with unions, the BC Care Providers Association, Denominational Health Association, health authorities, the Alzheimer's Society of BC, BC Federation of Labour and other partners, SafeCare BC will continue to deliver and develop a full suite of training, education and awareness programs that respond to the real needs of care aides, managers, nurses and other staff.

This work will be expanded in 2017 and include the growing home care and support sector.

