

Future Trends, Challenges and Promising Practices in Seniors' Care

MEGAMORPHOSIS: THE JOURNEY

FROM AN INSTITUTIONALIZED TO SOCIAL MODEL

BC Care Providers 42nd Annual Conference

Jo-Ann Tait, MScN, BHSc (PN), RPN

Corporate Director – Seniors Care, Providence Health Care

Regional Program Director – Long Term Care, Assisted Living and Supported Housing, Vancouver Coastal Health

Adjunct Professor – School of Nursing, University of British Columbia

May 27, 2019



www.providencehealthcare.org/residentialcareforme

#ResCare4Me



CURRENT STATE....

“our residents needs are increasing in complexity”

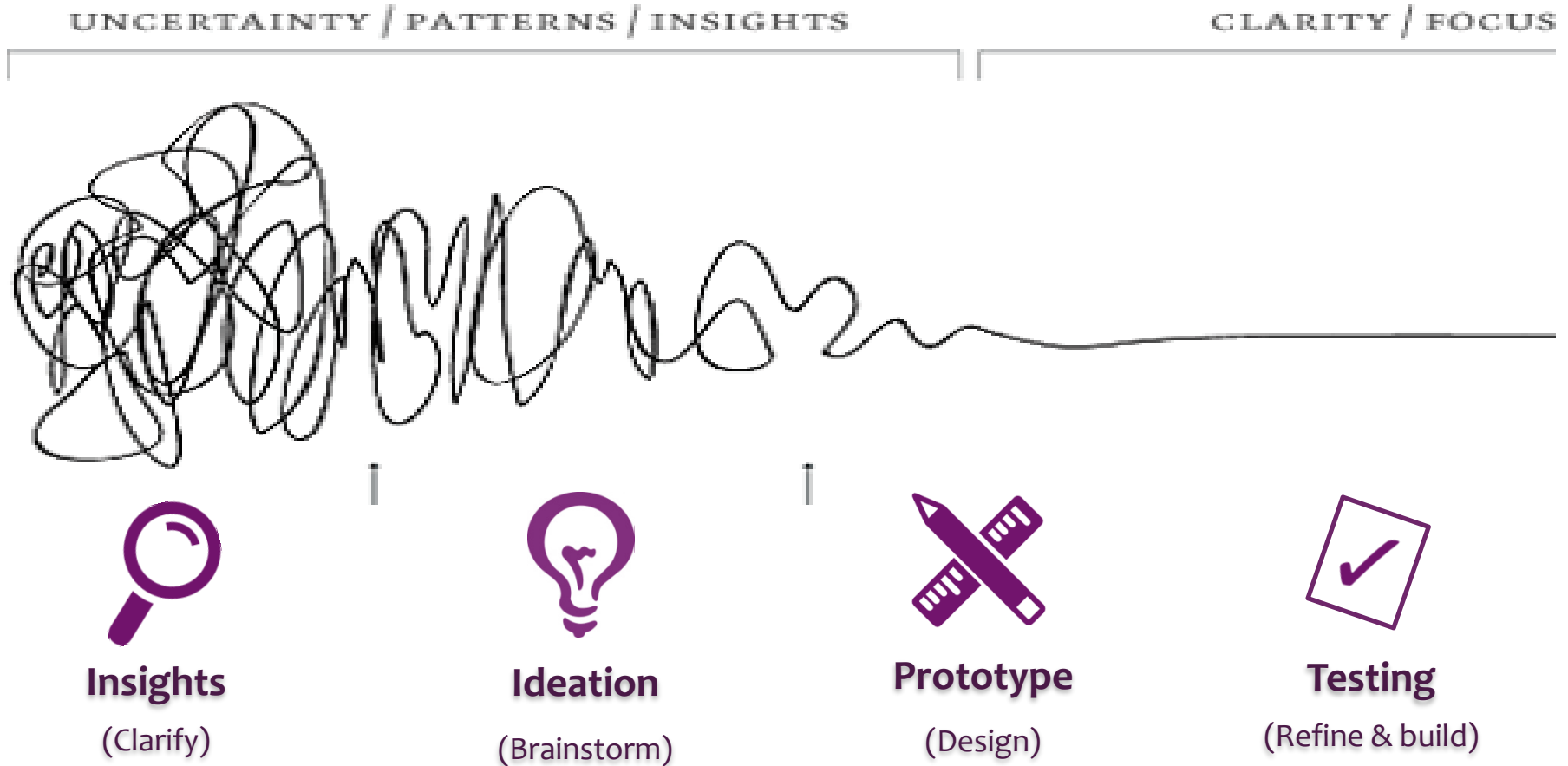
“we’re struggling to keep up”

“something needs to change, but we’re not sure what”

“we’ve tried already...”



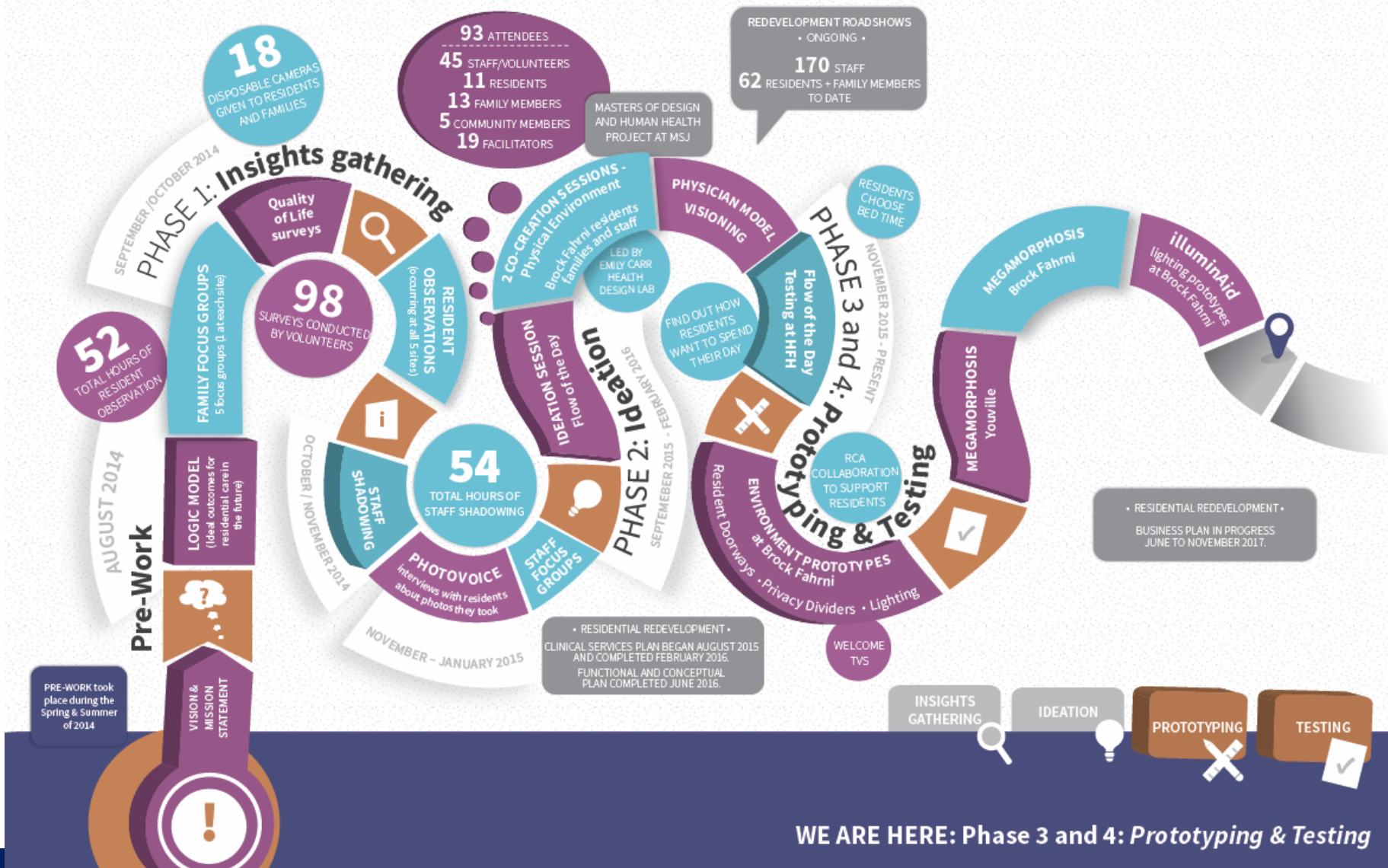
HUMAN-CENTRED DESIGN



The Residential Care for Me Journey So Far...



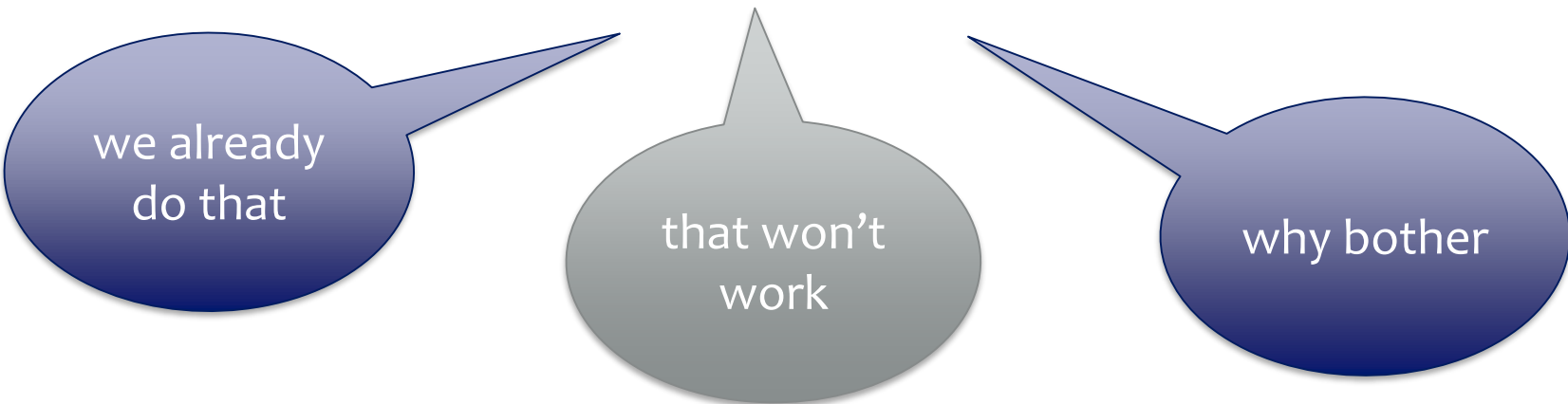
#ResCareMe



REASONS WHY THINGS STAY THE SAME

Why things stay the same:

- We judged ourselves on the busiest hours of the day 1000-1500 and the most full “Activity calendars”
- Get behind the curtains: 0700-0900 and after dinner
- too many institutional constraints to really make change
- someone else needs to change first – family members, funding, Licensing, WorkSafe, health authorities, Boards



we already
do that

that won't
work

why bother

“If you want to find out about water, don't ask a fish”

~ Chinese Proverb



WHAT IF...?



#ResCare4Me

- ... we threw everything we knew about Change Theory out the window?
- ... we created a sense of urgency of no longer accepting the ways things currently are?
- ... we shook things up so much we created a tidal wave of enthusiasm that outweighed the fear of change?
- ... the Residential Care for Me group led this process and used the vision to create the reality?
- ... we did a little pre-planning and a lot of on the ground learning during the two week Megamorphosis?
- ... we cleared our schedules for two weeks?

MEGAMORPHOSIS



#ResCare4Me



EMOTIONAL
CONNECTIONS
MATTER MOST



RESIDENTS DIRECT
EACH MOMENT



HOME IS NOT A
PLACE, IT IS A
FEELING



EMOTIONAL CONNECTIONS



QUALITY OF LIFE

BEFORE MEGAMORPHOSIS

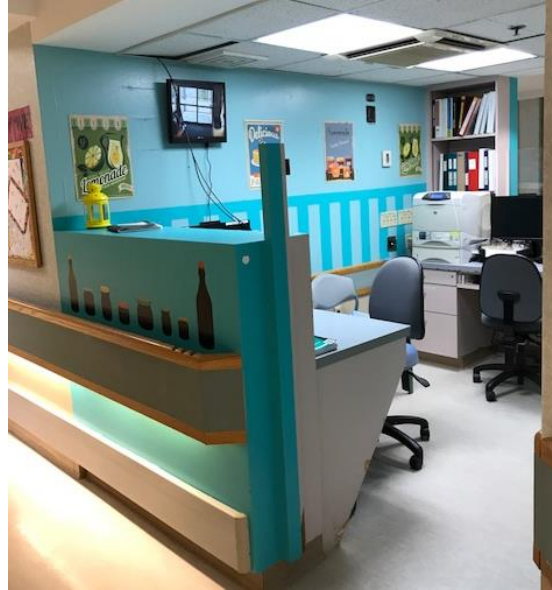


BEFORE MEGAMORPHOSIS



AFTER MEGAMORPHOSIS

An engaging environment: conversation starters



AFTER MEGAMORPHOSIS

Home first - staff workplace behind the scenes



THE IMPACT ON LIVES

~ Waftings from the Ether ~

Questioner:
How are we
to treat others?

Ramana Maharshi:
There are no others.

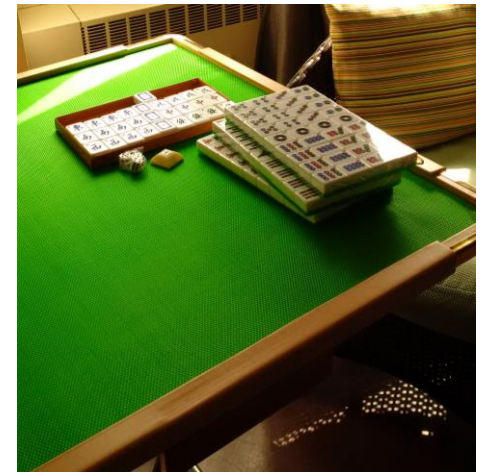


Image/Aamir Mohd Khan



THE IMPACT ON PEOPLE'S LIVES

The reason we exist.



Home is...

